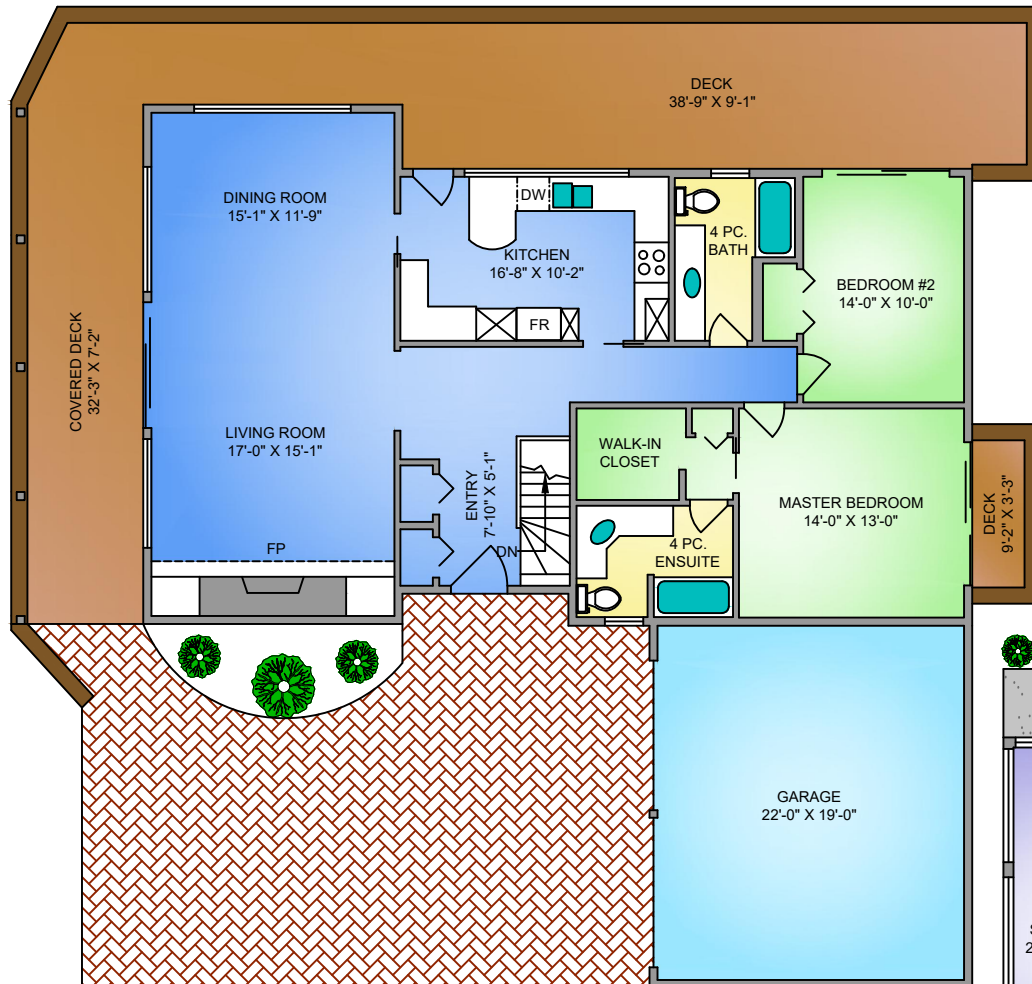


# MAIN FLOOR

## 1499 SQ. FT.



NORTH

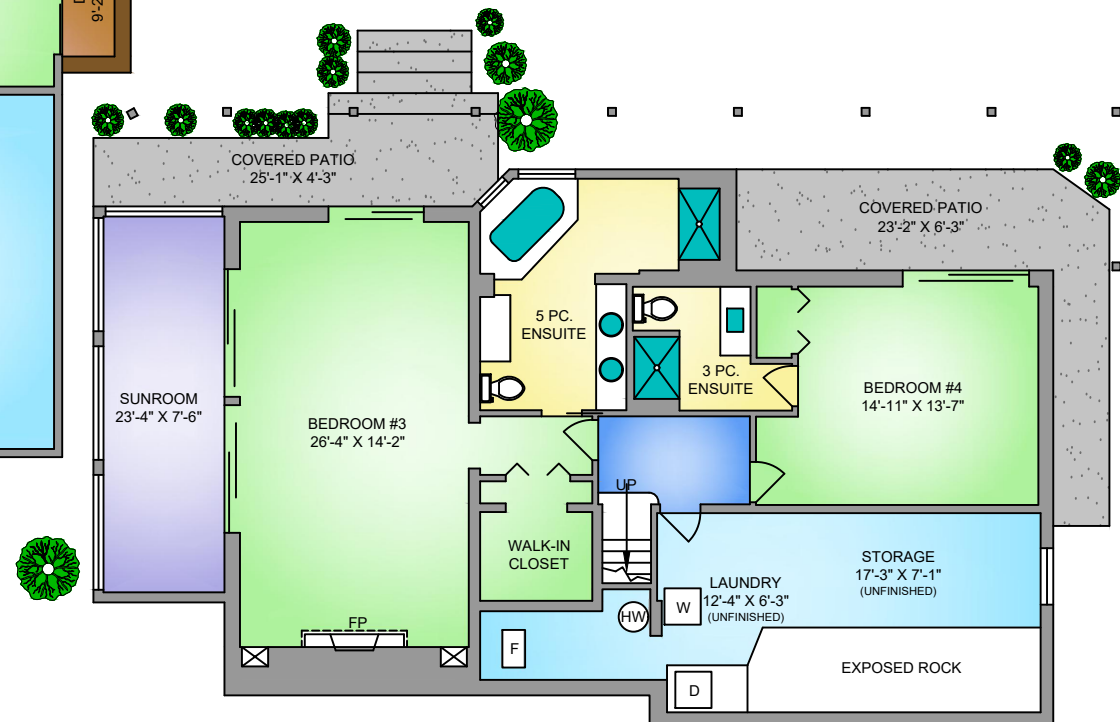


0' 5' 10'  
SCALE

# LOWER FLOOR

## 1376 SQ. FT.

+295 SQ.FT. UNFINISHED  
8'-6" CEILING



3610 OUTRIGGER ROAD  
SEPTEMBER 30, 2017

Prepared by PROPER MEASURE MID ISLAND for the exclusive use of IAN LINDSAY & ASSOCIATES  
Plans may not be 100% accurate. Buyer must verify any critical measurement.

Private resale or modification of floor plans to a third party by any individual or entity other than Proper Measure Mid Island is strictly prohibited

FLOOR	AREA (SQ. FT.)			
	FINISHED	UNFINISHED	GARAGE	DECK / PATIO
MAIN	1499	-	450	723
LOWER	1376	295	-	262
TOTAL	2875	295	450	985